



**Invesco**

## **Invesco USD Ultra-Short Term Debt Fund (the "Fund")**

### **A sub-fund of Invesco Funds (the "Umbrella Fund")**

### **Class C accumulation - USD (ISIN: LU0100597557) (the "Share Class")**

The Fund is managed by Invesco Management S.A., part of the Invesco Group.

## **Key Investor Information**

This document provides you with key investor information about this Fund. It is not marketing material. The information is required by law to help you understand the nature and the risks of investing in this Fund. You are advised to read it so you can make an informed decision about whether to invest.

### **Objectives and Investment Policy**

- The objective of the Fund is to provide a positive growth return through a conservative allocation (low duration and high credit rate quality) to rates and credit.
- The Fund will invest primarily in high quality short term debt instruments denominated in USD.
- The Fund may make significant use of derivatives (complex instruments) in order to (i) reduce the risk and/or generate additional capital or income and/ or (ii) meet the Fund's investment objectives by generating varying amounts of leverage (i.e. where the Fund gains market exposure in excess of the net asset value of the Fund).
- The Fund is actively managed without reference or constraint relative to a benchmark.
- The Fund promotes environmental, social and governance (ESG) criteria as covered under Article 8 of the Regulation (EU) 2019/2088 on sustainability-related disclosures in the financial services sector.
- You can buy and sell shares in the Fund on any Dealing Day (as defined in the Prospectus).
- Any income from your investment will be reinvested.

### **Risk and Reward Profile**

Lower Risk ← Higher Risk  
Typically lower rewards ← Typically higher rewards

1	2	3	4	5	6	7
---	---	---	---	---	---	---

- The Share Class is in risk category 2 due to the rises and falls of its price or simulated data in the past.
- As the Share Class' risk category has been calculated using historical data, it may not be a reliable indication of the Share Class' future risk profile.
- The risk category may change in the future and is not guaranteed.
- The lowest category does not mean a risk free investment.

### **Other Risks**

- The value of investments, and income from them, can go down as well as up and you may not get back the full amount you invested.
- The lack of common standards may result in different approaches to setting and achieving ESG objectives. In addition, the respect of the ESG criteria may cause the Fund to forego certain investment opportunities.
- Changes in interest rates will result in fluctuations in the value of the Fund.
- Debt instruments are exposed to credit risk which is the ability of the borrower to repay the interest and capital on the redemption date.
- It may be difficult for the Fund to buy or sell certain instruments in stressed market conditions. Consequently the price obtained when selling such instruments may be lower than under normal market conditions.
- The Fund may use derivatives (complex instruments) for investment purposes which may result in the Fund being significantly leveraged and may result in large fluctuations in the value of the Fund. The use of derivatives transactions may expose the Fund to counterparty risks that may result in losses to the Fund associated with the bankruptcy or insolvency of a counterparty.
- As this Fund is invested in a particular sector, you should be prepared to accept greater fluctuations in the value of the Fund than for a fund with a broader investment mandate.
- The Fund may hold a large amount of Asset Backed Securities (ABS) (complex instruments) as well as other lower quality debt securities which may impact the liquidity of the Fund under certain circumstances.
- A more detailed description of risk factors that apply to this Fund is set out in Section 8 of the Prospectus.

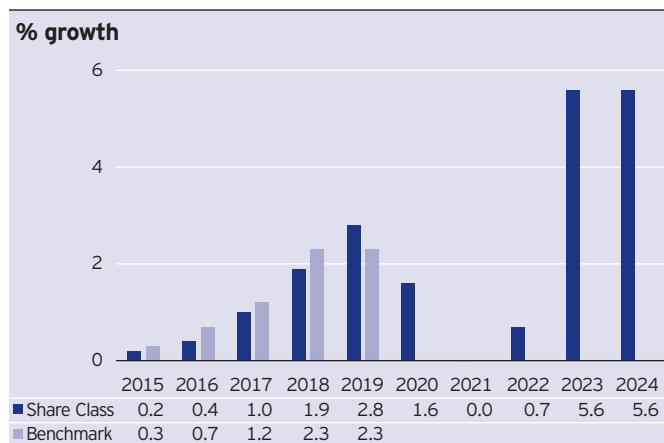
## Charges

The charges you pay are used to pay the costs of running the Fund, including the costs of marketing and distributing it. These charges reduce the potential growth of your investment.

One-off charges taken before or after you invest	
Entry charge	None
Exit charge	None
Any charges shown above are the maximum that might be taken out of your money before it is invested.	
Charges taken from the Share Class over a year	
Ongoing charge	0.27%
Charges taken from the Share Class under certain specific conditions	
Performance fee	None

- Any entry charge shown is a maximum figure. Where charges are shown, in some cases you might pay less; you can find this out from your financial adviser or distributor.
- The ongoing charges figure is based on annualised expenses for the period ending August 2024. This figure may vary from year to year. It excludes portfolio transaction costs except in the case of an entry or exit charge paid by the Fund when buying or selling shares/units in another fund.
- There is currently a discretionary cap on the ongoing charge of 0.27% in place. This discretionary cap may positively impact the performance of the Share Class.
- For more information about charges please see Section 4, Section 9 and Appendix A of the Fund's Prospectus.

## Past Performance



- Fund launch date: 02 January 1991.
- Share Class launch date: 09 August 1999.
- The base currency of the Fund is USD.
- Past performance of the Share Class is calculated in USD.
- Performance is calculated after deduction of ongoing charges, portfolio transactions costs and is inclusive of gross income reinvested. Any entry /exit charges shown are excluded from the calculation.
- Prior to 29.07.2020, the performance of the Share Class was compared to a benchmark: 3-Month USD LIBOR Index (the "Benchmark").
- Past performance is not a guide to future performance.

— The performance shown in the chart prior to 6 December 2018 was based on an objective and investment policy that no longer applies. For further details, please see <http://www.invesco.com/managementcompany.lu>.

## Practical Information

- Depository: The Bank of New York Mellon SA/NV, Luxembourg Branch.
- The Luxembourg tax regime may have an impact on your personal tax position and there may be tax implications in your country of residence and/or origin.
- Invesco Management S.A. may be held liable solely on the basis of any statement contained in this document that is misleading, inaccurate or inconsistent with the relevant parts of the Prospectus.
- The Umbrella Fund is structured by having different sub-funds. The assets and liabilities of each sub-fund are segregated by Luxembourg Law. As a consequence the assets of the Fund will not be available to meet the liabilities of another sub-fund within the Umbrella Fund.
- You are entitled to switch from this Fund to another fund on request, subject to the payment of a switching charge. Please refer to Section 5 of the Prospectus for more information.
- More share classes may be available for this Fund. You can find more information on our website.
- You can check the latest price for the Share Class on our website and on Reuters, Bloomberg and Morningstar.
- Information on the up-to-date remuneration policy of the Management Company, Invesco Management S.A., including but not limited to, a description of how remuneration and benefits are calculated and the identity of persons responsible for awarding the remuneration and benefits, including the composition of the remuneration committee, is available on the website of the Management Company, at [www.invesco.com/managementcompany.lu](http://www.invesco.com/managementcompany.lu) and a copy can be obtained, free of charge, from the Management Company.
- For further details on the ESG framework applicable to the Fund, please refer to the Appendix B of the Prospectus and the Fund's sustainability-related disclosures available on the Invesco local websites.
- Further details can be found in the Prospectus and the annual and semi-annual reports which can be obtained free of charge from the Fund's Registrar & Transfer Agent, The Bank of New York SA/NV, Luxembourg Branch, BP 648, L-2016 Luxembourg, Telephone +353 1 439 8100, Fax +352 24 52 4312; or the Management Company, 37A Avenue JF Kennedy, L-1855 Luxembourg; or by emailing [queries@invesco.com](mailto:queries@invesco.com) or on our website: [www.invesco.com](http://www.invesco.com). The Prospectus is available in English, French, Spanish and German and the reports in English.

This Fund is authorised in Luxembourg and regulated by the Commission de Surveillance du Secteur Financier.

Invesco Management S.A. is authorised in Luxembourg and regulated by the Commission de Surveillance du Secteur Financier.

This key investor information is accurate as at 14 February 2025.