



Key Investor Information

This document provides you with key investor information about this Fund. It is not marketing material. The information is required by law to help you understand the nature and the risks of investing in this Fund. You are advised to read it so you can make an informed decision about whether to invest.

Invesco

Invesco Asia Asset Allocation Fund (the "Fund")

A sub-fund of Invesco Funds (the "Umbrella Fund")

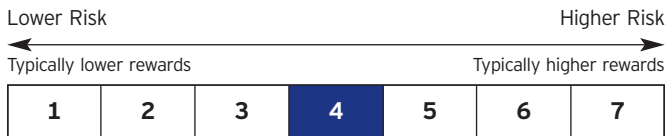
Class A (NZD hedged) monthly distribution-1 - NZD (ISIN: LU1075213055) (the "Share Class")

The Fund is managed by Invesco Management S.A., part of the Invesco Group.

Objectives and Investment Policy

- The objective of the Fund is to achieve income and long-term capital growth.
- The Fund intends to invest primarily in shares of companies and debt instruments (including contingent convertibles) in the Asia-Pacific region.
- The Fund defines Asia-Pacific to include the Indian subcontinent and Australasia but excludes Japan.
- The Fund may invest in debt instruments which are in financial distress (distressed securities).
- Under exceptional circumstances, the Fund may be invested up to 100% of its net asset value in money market instruments.
- The Fund may make significant use of derivatives (complex instruments) in order to (i) reduce the risk and/or generate additional capital or income and/or (ii) meet the Fund's investment objectives by generating varying amounts of leverage (i.e. where the Fund gains market exposure in excess of the net asset value of the Fund).
- The Fund is actively managed without reference or constraint relative to a benchmark.
- The Fund promotes environmental, social and governance (ESG) criteria as covered under Article 8 of the Regulation (EU) 2019/2088 on sustainability-related disclosures in the financial services sector.
- You can buy and sell shares in the Fund on any Dealing Day (as defined in the Prospectus).
- Any income from your investment will be paid monthly.

Risk and Reward Profile



- The Share Class is in risk category 4 due to the rises and falls of its price or simulated data in the past.
- As the Share Class' risk category has been calculated using historical data, it may not be a reliable indication of the Share Class' future risk profile.
- The risk category may change in the future and is not guaranteed.
- The lowest category does not mean a risk free investment.

Other Risks

- The value of investments, and income from them, can go down as well as up and you may not get back the full amount you invested.
- Shares of companies are generally considered high risk investments and may result in fluctuations in the value of the Fund due to external factors.
- Changes in interest rates will result in fluctuations in the value of the Fund.
- The Fund may invest in distressed securities which carry a significant risk of capital loss.
- Debt instruments are exposed to credit risk which is the ability of the borrower to repay the interest and capital on the redemption date.
- Investments in debt instruments which are of lower credit quality may result in large fluctuations in the value of the Fund.
- Return on your investment may be adversely affected by variations in exchange rates.
- It may be difficult for the Fund to buy or sell certain instruments in stressed market conditions. Consequently the price obtained when selling such instruments may be lower than under normal market conditions.
- The Fund may use derivatives (complex instruments) for investment purposes which may result in the Fund being significantly leveraged and may result in large fluctuations in the value of the Fund. The use of derivatives transactions may expose the Fund to counterparty risks that may result in losses to the Fund associated with the bankruptcy or insolvency of a counterparty.
- The Fund may invest in a dynamic way across assets/asset classes, which may result in periodic changes in the risk profile, underperformance and/or higher transaction costs.
- The Fund may use Stock Connect to access China A Shares traded in Mainland China. This may result in additional liquidity risk and operational risks including settlement and default risks, regulatory risk and system failure risk.
- The Fund may invest in contingent convertible bonds which may result in significant risk of capital loss based on certain trigger events.
- As a large portion of the Fund is invested in less developed countries, you should be prepared to accept significantly large fluctuations in the value of the Fund.
- This Share Class is denominated in a different currency than that of the base currency of the Fund and may be hedged to mitigate against the effect of exchange rate fluctuations between the two currencies. However, this may not be achieved.
- The Fund may distribute out of gross income and/or directly from capital, therefore this will result in a reduction of the capital and will constrain future capital growth.
- A more detailed description of risk factors that apply to this Fund is set out in Section 8 of the Prospectus.

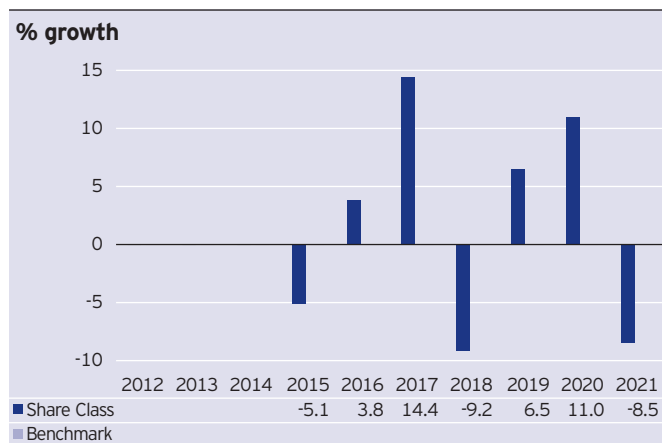
Charges

The charges you pay are used to pay the costs of running the Fund, including the costs of marketing and distributing it. These charges reduce the potential growth of your investment.

One-off charges taken before or after you invest	
Entry charge	5.00%
Exit charge	None
Any charges shown above are the maximum that might be taken out of your money before it is invested.	
Charges taken from the Share Class over a year	
Ongoing charge	1.69%
Charges taken from the Share Class under certain specific conditions	
Performance fee	None

- Any entry charge shown is a maximum figure. Where charges are shown, in some cases you might pay less; you can find this out from your financial adviser or distributor.
- The ongoing charges figure is based on annualised expenses for the period ending August 2022. This figure may vary from year to year. It excludes portfolio transaction costs except in the case of an entry or exit charge paid by the Fund when buying or selling shares/units in another fund.
- If you switch funds, you will pay a maximum switching charge of 1% on your new fund.
- In addition to the charges set out in the charges section, the fund will incur portfolio transaction costs which are paid from the assets of the fund. These may have a material impact on your returns.
- For more information about charges please see Section 4, Section 9 and Appendix A of the Fund's Prospectus.

Past Performance



- Fund launch date: 31 October 2008.
- Share Class launch date: 20 August 2014.
- The base currency of the Fund is USD.
- Past performance of the Share Class is calculated in NZD.
- Performance is calculated after deduction of ongoing charges, portfolio transactions costs and is inclusive of gross income reinvested. Any entry /exit charges shown are excluded from the calculation.
- Past performance is not a guide to future performance.

— The performance shown in the chart prior to 14 August 2020 is based on an objective and investment policy that no longer applies. For further details, please see www.invesco.com/managementcompany.lu.

Practical Information

- Depository: The Bank of New York Mellon SA/NV, Luxembourg Branch.
- The Luxembourg tax regime may have an impact on your personal tax position and there may be tax implications in your country of residence and/or origin.
- Invesco Management S.A. may be held liable solely on the basis of any statement contained in this document that is misleading, inaccurate or inconsistent with the relevant parts of the Prospectus.
- The Umbrella Fund is structured by having different sub-funds. The assets and liabilities of each sub-fund are segregated by Luxembourg Law. As a consequence the assets of the Fund will not be available to meet the liabilities of another sub-fund within the Umbrella Fund.
- You are entitled to switch from this Fund to another fund on request, subject to the payment of a switching charge. Please refer to Section 5 of the Prospectus for more information.
- More share classes may be available for this Fund. You can find more information on our website.
- You can check the latest price for the Share Class on our website and on Reuters, Bloomberg and Morningstar.
- Information on the up-to-date remuneration policy of the Management Company, Invesco Management S.A., including but not limited to, a description of how remuneration and benefits are calculated and the identity of persons responsible for awarding the remuneration and benefits, including the composition of the remuneration committee, is available on the website of the Management Company, at www.invesco.com/managementcompany.lu and a copy can be obtained, free of charge, from the Management Company.
- For further details on the ESG framework applicable to the Fund, please refer to the Appendix A of the Prospectus and the Fund's ESG policy available on the website of the management company.
- Further details can be found in the Prospectus and the annual and semi-annual reports which can be obtained free of charge from the Fund's Registrar & Transfer Agent, The Bank of New York SA/NV, Luxembourg Branch, BP 648, L-2016 Luxembourg, Telephone +353 1 439 8100, Fax +352 24 52 4312; or the Management Company, 37A Avenue JF Kennedy, L-1855 Luxembourg; or by emailing queries@invesco.com or on our website: www.invesco.com. The Prospectus is available in English, French, Spanish, Italian and German and the reports in English and German.

This Fund is authorised in Luxembourg and regulated by the Commission de Surveillance du Secteur Financier.

Invesco Management S.A. is authorised in Luxembourg and regulated by the Commission de Surveillance du Secteur Financier.

This key investor information is accurate as at 02 December 2022.